

零件目录

PARTS CATALOGUE

F4

江苏泰格游艇制造有限公司

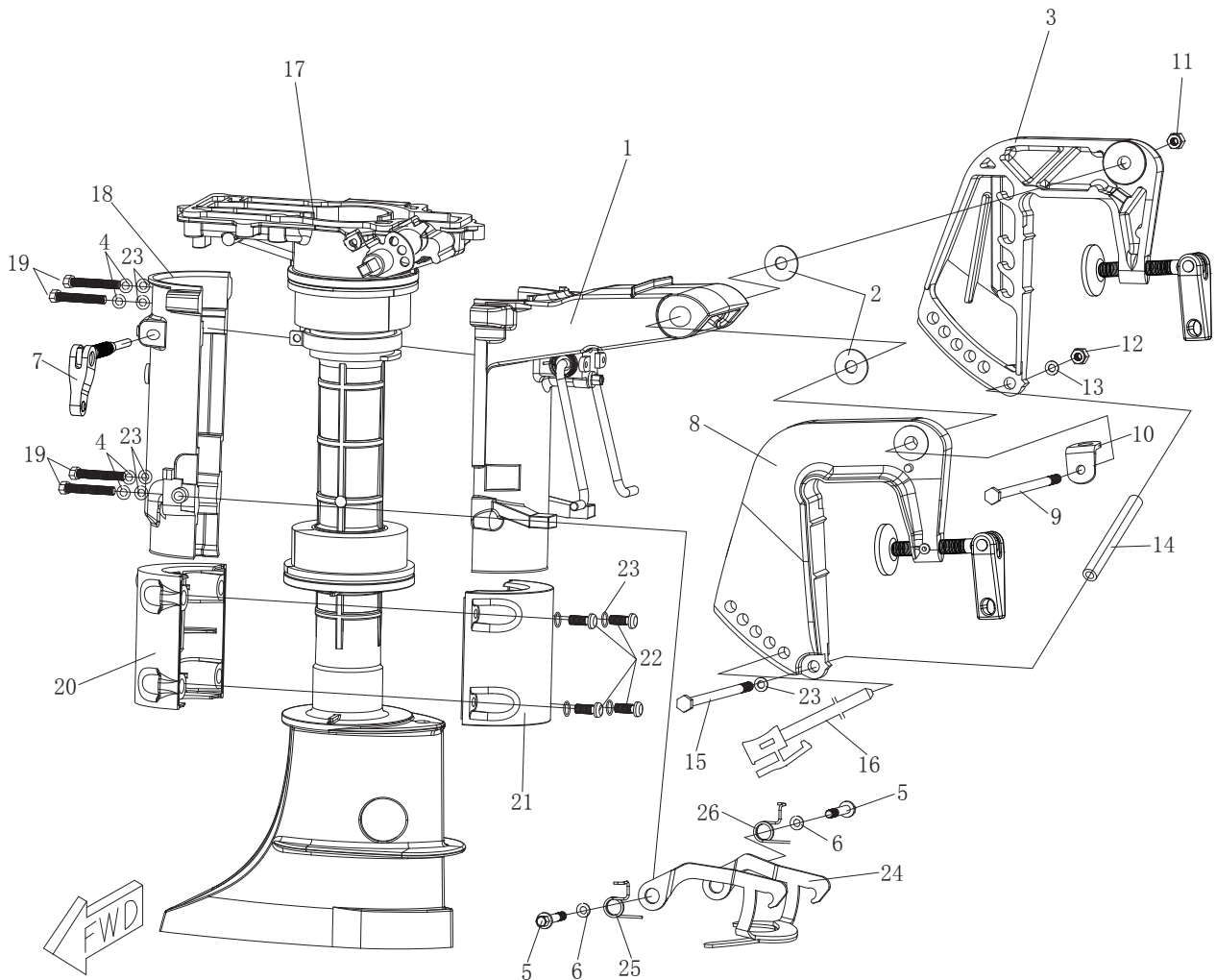


FIG. 1 STEERING BRACKET ASSY

图1 操舵支架组件

REF. NO. 号码	PART NO. 零件编号	DESCRIPTION 零件名称	QUANTITY 数量	UNIT PRICE 单价 (USD)	REF. NO. 号码	PART NO. 零件编号	DESCRIPTION 零件名称	QUANTITY 数量	UNIT PRICE 单价 (USD)
1	9020103000000	Bracket assy 旋转支架体组件	1		16	9020105000000	Tilt pin component 角度限位插销组件	1	
2	9020100000300	Plastic washer 尼龙垫圈	2		17	9020104000000	Swivel bracket component 旋转支架组件	1	
3	9020102000000	Clamp bracket assy(left) 夹紧托架组件(左)	1		18	9020100000500	Bracket 旋转支架座盖	1	
4	0305060012	Spring washer 弹簧垫圈6	4		19	0502060352	Bolt 六角头螺栓M6×35	4	
5	0502060122	Bolt 六角头螺栓M6×12	2		20	9020104030100	Bracket 怠速排气罩上壳	1	
6	0303060012	Washer 大垫圈6	2		21	9020104030200	Bracket 怠速排气罩下壳	1	
7	9020106000000	Screw 锁紧手柄组件	1		22	0505060162	Screw 十字槽盘头螺钉M6×16	4	
8	9020101000000	Clamp bracket assy(right) 夹紧托架组件(右)	1		23	0301060012	Washer 小垫圈6	9	
9	9010200000100	Bolt 六角头加长螺栓M8×134	2		24	9020107000000	Plate 起翘锁紧钩组件	1	
10	9020100000200	Double holt plate 双孔固定板	2		25	9020100000700	Spring 锁紧钩扭簧(右)	1	
11	0406080012	Lock nut 非金属嵌件六角锁紧螺母M8	1		26	9020100000600	Spring 锁紧钩扭簧(左)	1	
12	0406060012	Lock nut 非金属嵌件六角锁紧螺母M6	1						
13	0301060012	Washer 小垫圈6	1						
14	9020100000400	Collar 螺栓垫管	1						
15	0501061202	Bolt 六角头螺栓M6×120	1						

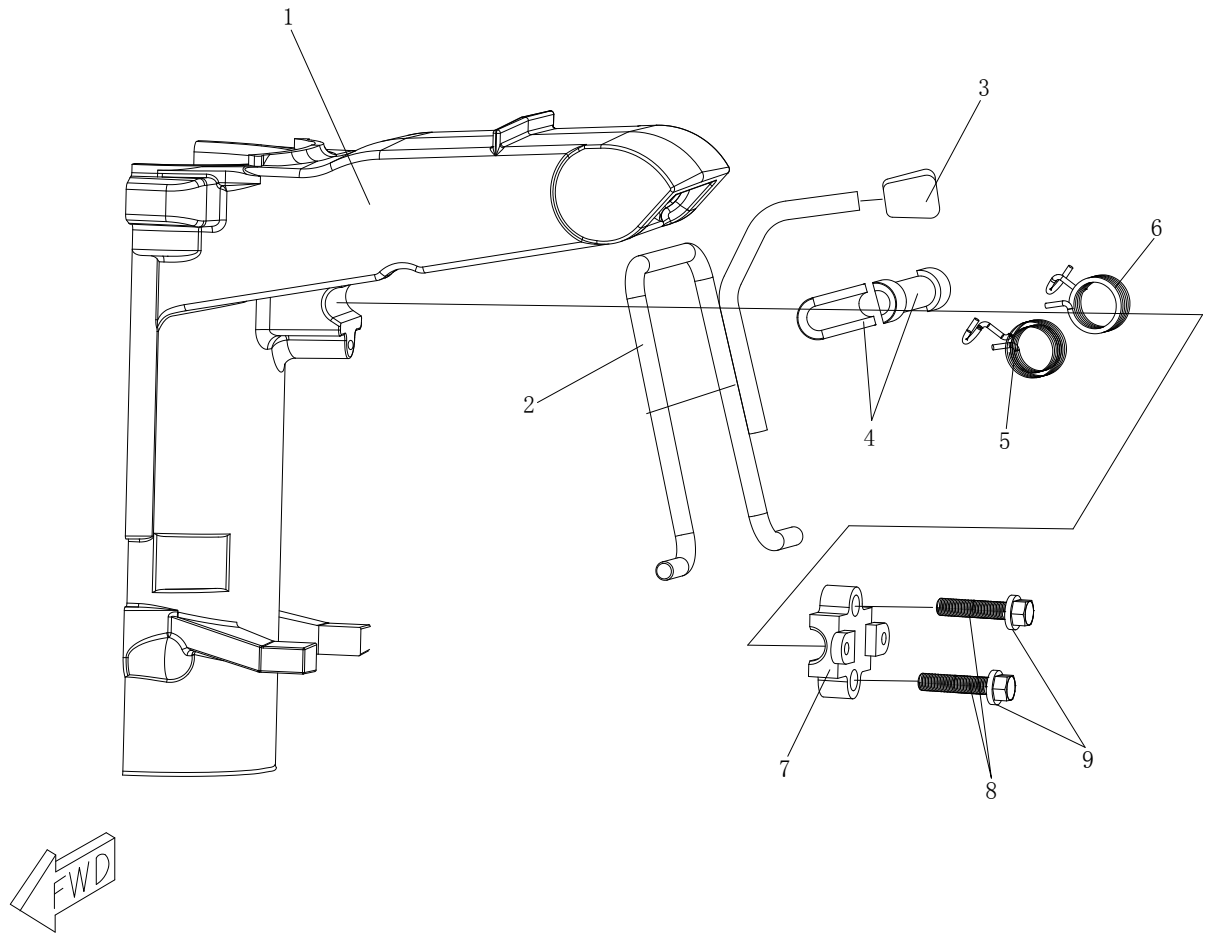


FIG. 2 BRACKET ASSY

图2 旋转支架体组件

REF. NO. 号码	PART NO. 零件编号	DESCRIPTION 零件名称	QUANTITY 数量	UNIT PRICE 单价 (USD)	REF. NO. 号码	PART NO. 零件编号	DESCRIPTION 零件名称	QUANTITY 数量	UNIT PRICE 单价 (USD)
1	9020103000100	Bracket 旋转支架座	1						
2	9020103010000	Lever 角度定位支撑架组件	1						
3	9020103010300	Knob 手柄套	1						
4	9020103000200	Bushing 支撑架尼龙衬套	2						
5	9020103000300	Spring 支撑架扭簧(左)	1						
6	9020103000400	Spring 支撑架扭簧(右)	1						
7	9020103000500	BRACKET, SWIVEL 支撑架固定盖	1						
8	0502060202	Bolt 六角头螺栓M6×20	2						
9	0301060012	Washer 小垫圈6	2						

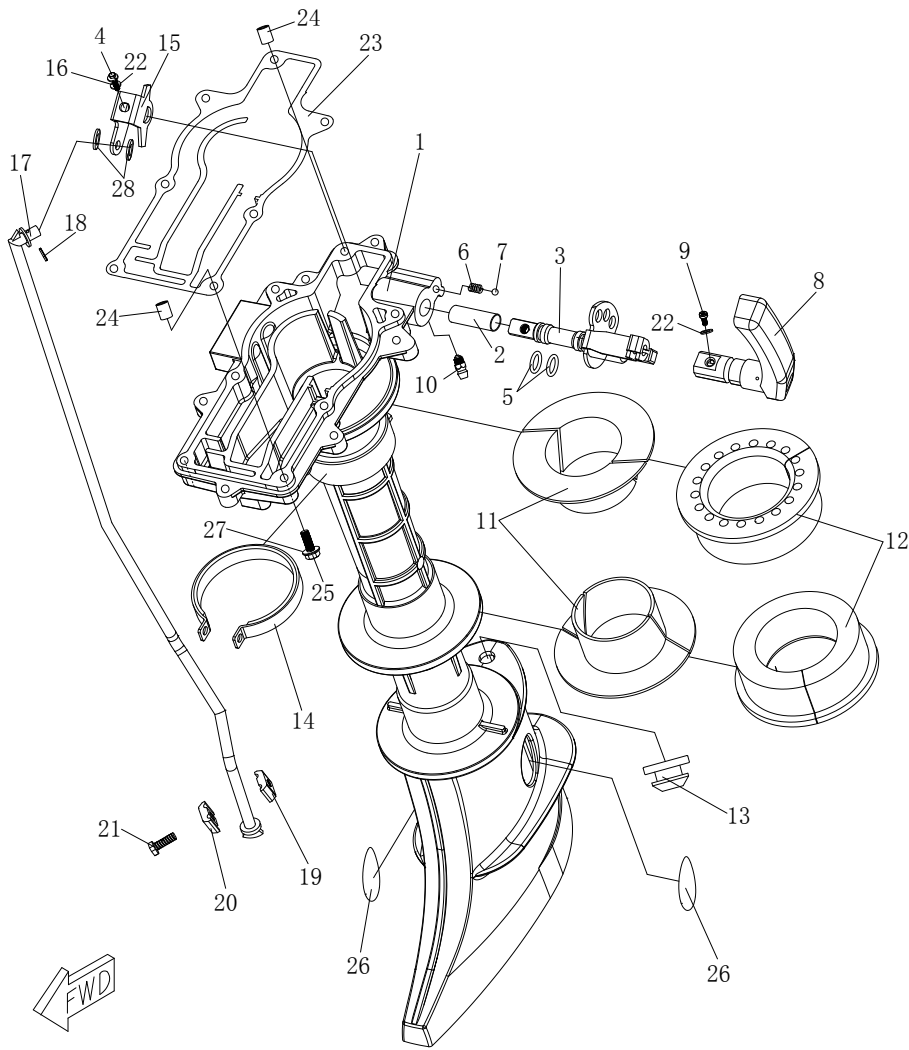


FIG. 3 SWIVEL BRACKET ASSY

图3 旋转支架组件

REF. NO. 号码	PART NO. 零件编号	DESCRIPTION 零件名称	QUANTITY 数量	UNIT PRICE 单价 (USD)	REF. NO. 号码	PART NO. 零件编号	DESCRIPTION 零件名称	QUANTITY 数量	UNIT PRICE 单价 (USD)
1	9020104000100	Swivel bracker 旋转支架	1		16	0502050252	Bolt 六角头螺栓M5×25	1	
2	9010300000700	Bushing shift roc lvever 轴套	1		17	9020104000400	Rod shift 变档连杆	1	
3	9020104010000	Shaft change 变档拨叉组件	1		18	0704160122	Cotter 开口销1.6×12	1	
4	0305050012	Spring washer 弹簧垫圈5	1		19	9020000000400	Connector shift rod 变档杆锁紧块B	1	
5	0202090181	O-ring O型密封圈φ9(内)×1.8	2		20	9020000000300	Connector shift rod 变档杆锁紧块A	1	
6	9010300000800	Spring compression 变档限位弹簧	1		21	0502060202	Bolt 六角头螺栓M6×20	1	
7	1001050162	Ball 钢珠5/16	1		22	0301050012	Washer 小垫圈5	2	
8	9020000001000	Handle gear shift 变档手柄	1		23	9020000000900	Gasket upper casing 发动机密封垫	1	
9	0505050162	Screw 十字槽盘头螺钉M5×16	1		24	9020000000100	Collar 空心定位销φ6.5×φ9×10	2	
10	1101060011	NIPPLE, GREASE 直通式压注油杯	1		25	0502060352	Bolt 六角头螺栓M6×35	7	
11	9020104000800	Bushing 减震圈衬管	2		26	9010000000300	Cover upper casing 变档杆调节孔堵塞	1	
12	9020104000900	Bushing 减震圈	2		27	0301060012	Washer 小垫圈6	7	
13	9020104001200	O-ring 变档轴密封圈	1		28	0302050012	Washer 平垫圈5	2	
14	9020104020000	Plate 支架锁紧钢圈组件	1						
15	9020104000600	Lever shift rod 变档连杆支架	1						

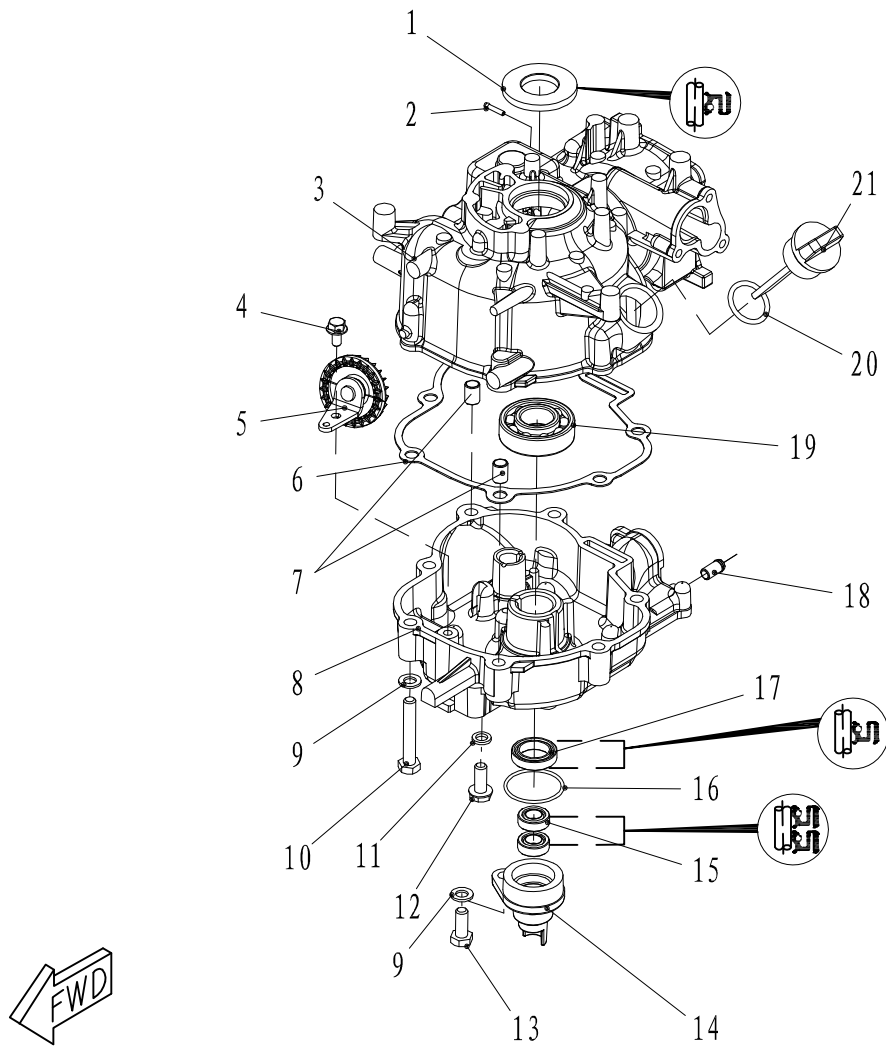


FIG5 CYLINDER&CRANKCASE

图5 曲轴箱体和曲轴箱盖

REF. NO. 号码	PART NO. 零件编号	DESCRIPTION 零件名称	QUANTITY 数量	UNIT PRICE 单价 (USD)	REF. NO. 号码	PART NO. 零件编号	DESCRIPTION 零件名称	QUANTITY 数量	UNIT PRICE 单价 (USD)
1	9020700004000	OIL SEAL 25X40X5 油封25X40X5	1		16	0202350201	O-ring O型密封圈Φ35 (内) × Φ2	1	
2	8060101000200	Nozzle tip 气管圆接头	1		17	9020706000200	Oil seal 曲轴下油封20x30x7	1	
3	9020701010000	Crankcase 曲轴箱体	1		18	9010105020200	Nipple. drian 气嘴	1	
4	0504060122	Bolt 六角法兰面螺栓M6X12	1		19	0801620531	Bearing 6205C3 深沟球轴承6205C3	1	
5	9020705010000	Gear of splashing oil assy 甩油齿轮组件	1		20	0201310311	O-ring O型圈Φ31 (外) × Φ3.1	1	
6	9020700000200	CRANKCASE COMPOSITE MAT 曲轴箱体密封垫	1		21	9020700001100	Plug oil level 带尺机油盖	1	
7	9090100000200	HOLLOW PIN, DOWEL 空心定位销φ8.4*φ10*13.8	2						
8	9020705000100	Crankcase cover 曲轴箱盖	1						
9	0301080012	Washer 小垫圈 8	8						
10	0512080504	Bolt 六角头螺栓 M8X50-8.8 (镀镍)	7						
11	9010102000200	OIL DRAIN BOLT SEAL MAT 放油螺栓密封垫	1						
12	9010102000100	Flange Bolt 六角凸缘螺栓M8x15	1						
13	0512080202	Bolt 六角头螺栓 M8X20(全牙S=12)	1						
14	9020706000100	Housing, oil seal 油封壳体	1						
15	9020706000300	Oil seal 油封10.8x21x7	2						

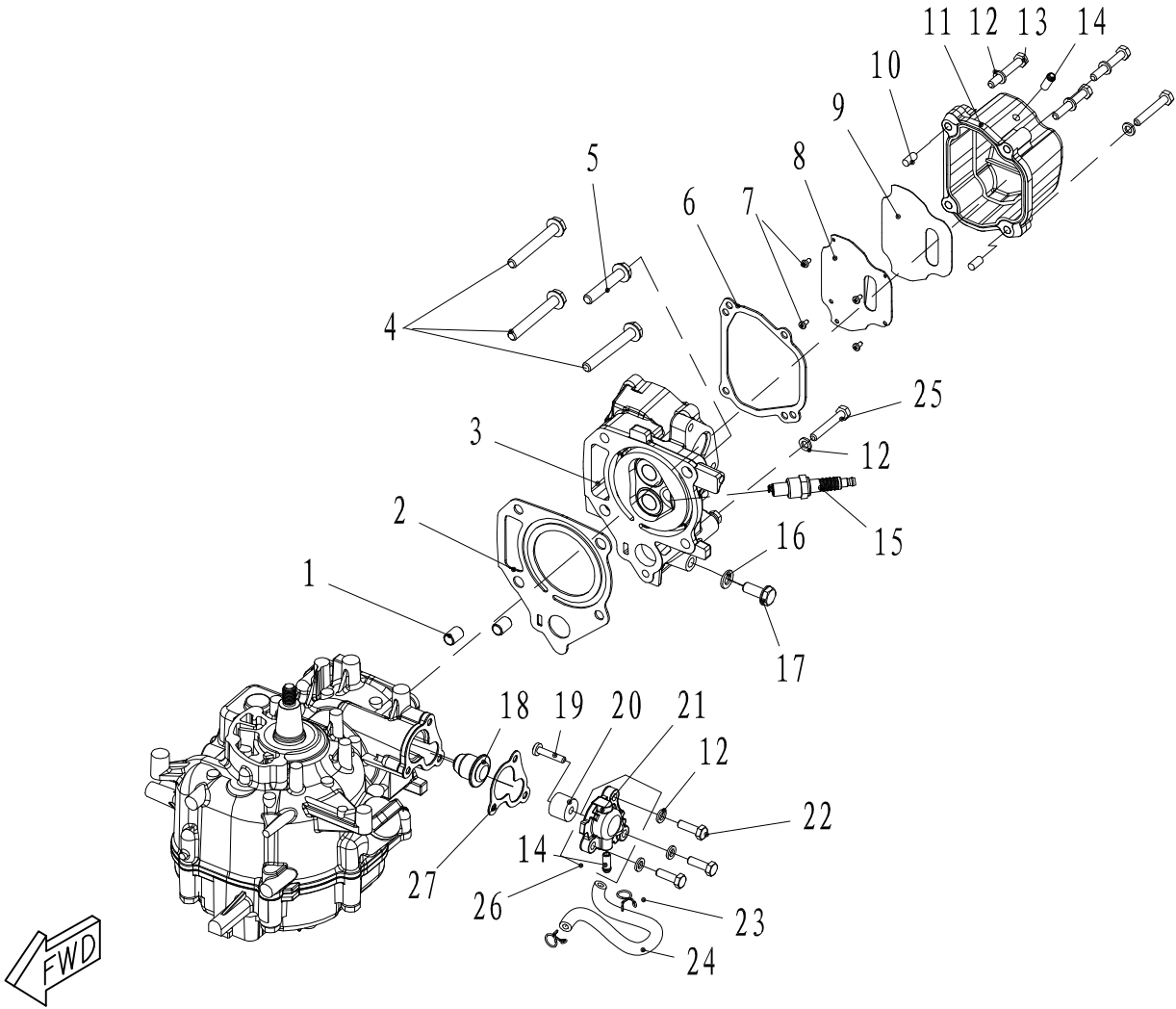


FIG6 HEAD CYLINDER ASSY

图6 汽缸盖组件

REF. NO.	PART NO.	DESCRIPTION	QUANTITY	UNIT PRICE	REF. NO.	PART NO.	DESCRIPTION	QUANTITY	UNIT PRICE
号码	零件编号	零件名称	数量	单价 (USD)	号码	零件编号	零件名称	数量	单价 (USD)
1	9090100000200	HOLLOW PIN, DOWEL 空心定位销 $\phi 8 * \phi 10 * 13.8$	2		16	9010102000200	OIL DRAIN BOLT SEAL MAT 放油螺栓密封垫	1	
2	9020700001800	HEAD, CYLINDER COMPOSITE MAT 缸头复合垫	1		17	9010102000100	Flange Bolt 六角凸缘螺栓 M8x15	1	
3	9020708000000	HEAD, CYLINDER ASSY 气缸头组件	1		18	9090101001500	THERMOSTAT 节温器	1	
4	9010100000100	FLANGE BOLT M8X60-10.9 六角凸缘螺栓 M8X60-10.9 (镀镍)	3		19	0505050252	Screw 十字槽盘头螺钉 M5X25	1	
5	9020700002200	FLANGE BOLT M8X40-10.9 六角凸缘螺栓 M8X40-10.9 (镀镍)	1		20	9010105020300	ANODE 节温气盖阳极	1	
6	9020700002300	COVER, CYLINDER HEAD SEAL MAT 缸头罩密封垫	1		21	9020707000000	COVER THERMOSTAT 节温气盖	1	
7	0505030062	PHILLIPS SCREW M3X6 十字槽盘头螺钉 M3X6	4		22	0502060202	Bolt 六角头螺栓 M6X20	3	
8	9020715000000	CHECK VALVE ASSY 缸头罩阀片组件	1		23	9040100002000	Clip 油管夹簧	2	
9	9020700003900	COVER, CYLINDER HEAD COMPART MAT 缸头罩隔板垫片	1		24	XJSG0509	RETURN TUBE 回水管	1	
10	9090301000200	PIN, DOWEL $\phi 6 * 12$ 定位销 $\phi 6 * 12$	2		25	0502060454	BOLT M6X45-8.8 六角头螺栓 M6X45-8.8 (镀镍)	1	
11	9020700002400	COVER, CYLINDER HEAD 缸头罩	1		26	9020707000000	COVER, THERMOSTAT ASSY 节温器盖组件	1	
12	0301060012	Washer 小垫圈 6	8		27	9010105020400	Thermostat gasket 节温器盖垫片	1	
13	0502060402	Bolt M6 x 40 六角头螺栓 M6X40	4						
14	9010105020200	Nipple, drian 气嘴	2						
15	8060100001400	PLUG, SPARK BPR7HS 火花塞 BPR7HS	1						

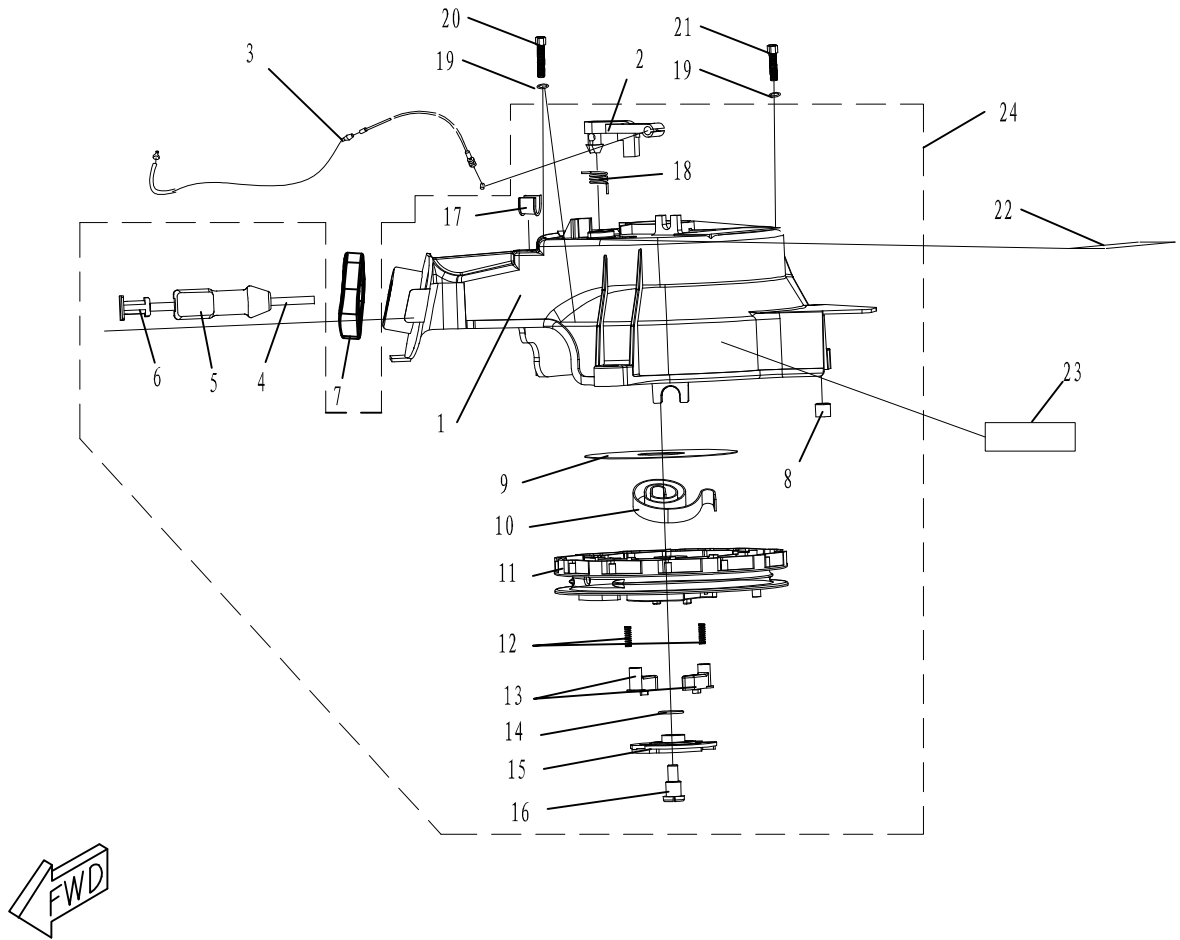


FIG7 STARTER ASSY

图7 起动器组件

REF. NO.	PART NO.	DESCRIPTION	QUANTITY	UNIT PRICE	REF. NO.	PART NO.	DESCRIPTION	QUANTITY	UNIT PRICE
号码	零件编号	零件名称	数量	单价(USD)	号码	零件编号	零件名称	数量	单价(USD)
1	9020714000100	Recoil starter case 起动器外壳	1		16	9010107000900	Screw 十字槽盘头螺钉	1	
2	9020714000900	STOPPER 制动器	1		17	9020714001400	COLLAR 起动绳限位件	1	
3	9020714001200	CABLE COMP STARTER STOP 制动器钢索组件	1		18	9020714001100	SPRING RETURN 制动器扭簧	1	
4	9020714001000	starter rope 起动绳Φ4x1.85m	1		19	0301060012	Washer 小垫圈 6	3	
5	9090105030000	starter handle 起动手柄组件	1		20	0502060352	Bolt 六角头螺栓 M6X35	2	
6	9090105001300	starter handle cover 手柄盖	1		21	0502060202	Bolt 六角头螺栓 M6X25	1	
7	9020714001900	SEAL RUBBER 起动减震块	1		22	9090800000100	MARK 飞轮警示标贴	1	
8	9020711000400	COLLAR 进气消音器壳垫管	3		23	9020000001800	MARK 机油说明标贴	1	
9	9020714001500	WASHER THRUST 起动轮减磨片	1		24	9020714000000	STARTER ASSY 起动器组件	1	
10	9010107000200	SPRING STARTER 滴形弹簧	1						
11	9020714002100	DRUM SHEAVE 起动轮	1						
12	9020714000400	SPRING 卡瓣弹簧	2						
13	9020714000300	PAWL DRIVE 卡瓣	2						
14	9010107001000	SPRING DRIVE PAWL 弹性挡圈	1						
15	9020714000600	GUIDE CAM 起动压板	1						

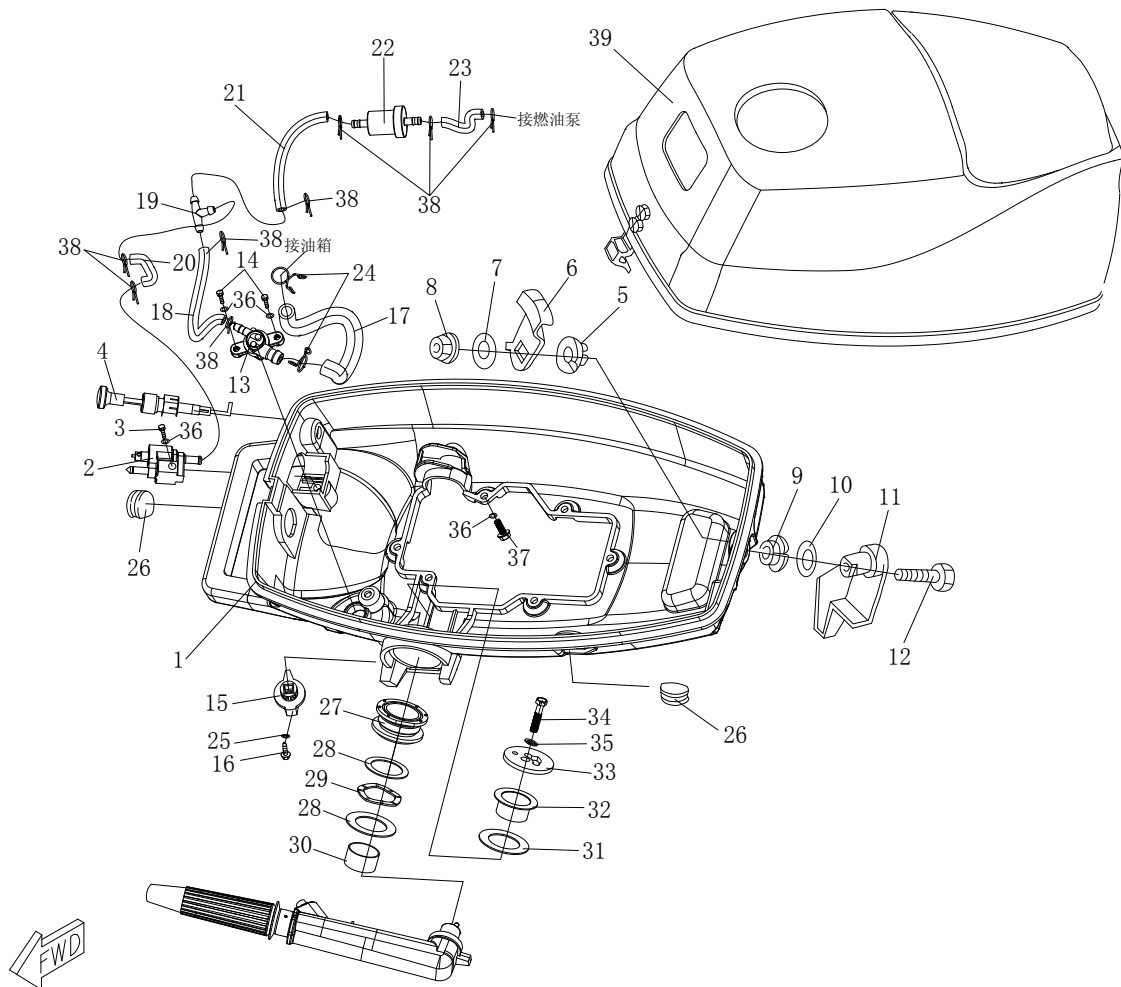


FIG. 1 TOP COWLING & BOTTOM COWLING ASSY

图8 顶罩、底罩组件

REF. NO. 号码	PART NO. 零件编号	DESCRIPTION 零件名称	QUANTITY 数量	UNIT PRICE 单价 (USD)	REF. NO. 号码	PART NO. 零件编号	DESCRIPTION 零件名称	QUANTITY 数量	UNIT PRICE 单价 (USD)
1	9020800000100	Bottoman cowling 底罩	1		16	0505040102	Screw 十字槽盘头螺钉M4×10	1	
2	9090200010000	Fuel jiont 燃油管插头组件	1		17	9020800000700	Fule hose 燃油管C	1	
3	0508060252	Screw 十字槽小盘头螺钉M6×25	1		18	NYFHG0509	Fule hose 燃油管D	1	
4	9021001000000	Starter cable assy 阻风门拉手总成	1		19	9090000001000	Fule cock 三通	1	
5	8030200000600	Bushing 尼龙衬圈	1		20	NYFHG0509	Fule hose 燃油管E	1	
6	8030200000700	Holder clamp band 锁紧块	1		21	NYFHG0509	Fule hose 燃油管B	1	
7	0304060012	Washer 特大垫圈6	1		22	9020800001200	Oil cup 油杯组件	1	
8	0406060012	Nut 非金属嵌件六角锁紧螺母M6	1		23	NYFHG0509	Fule hose 燃油管A	1	
9	8030200000600	Bushing 尼龙衬圈	1		24	9020800001100	Clip 油管夹簧A	2	
10	0308190012	Washer 波形垫圈	1		25	0302040012	Washer 平垫圈	8	
11	8030200000500	Lock lever 底罩锁紧手柄	1		26	9090200001600	Rubber plup 橡胶前闷头(大)	2	
12	0502060252	Bolt 六角头螺栓M6×25	1		27	9010300050000	Sleeve assy 轴套组件	1	
13	9020803000100	Fule cock 燃油管两通阀	1		28	9010300001800	Washer 垫圈	2	
14	0505060122	Screw 十字槽盘头螺钉M6×12	2		29	9010300001700	Washer 波形垫圈	1	
15	21000041	Knob 油开关旋钮	1		30	9010300001600	Bushing 尼龙衬套	1	

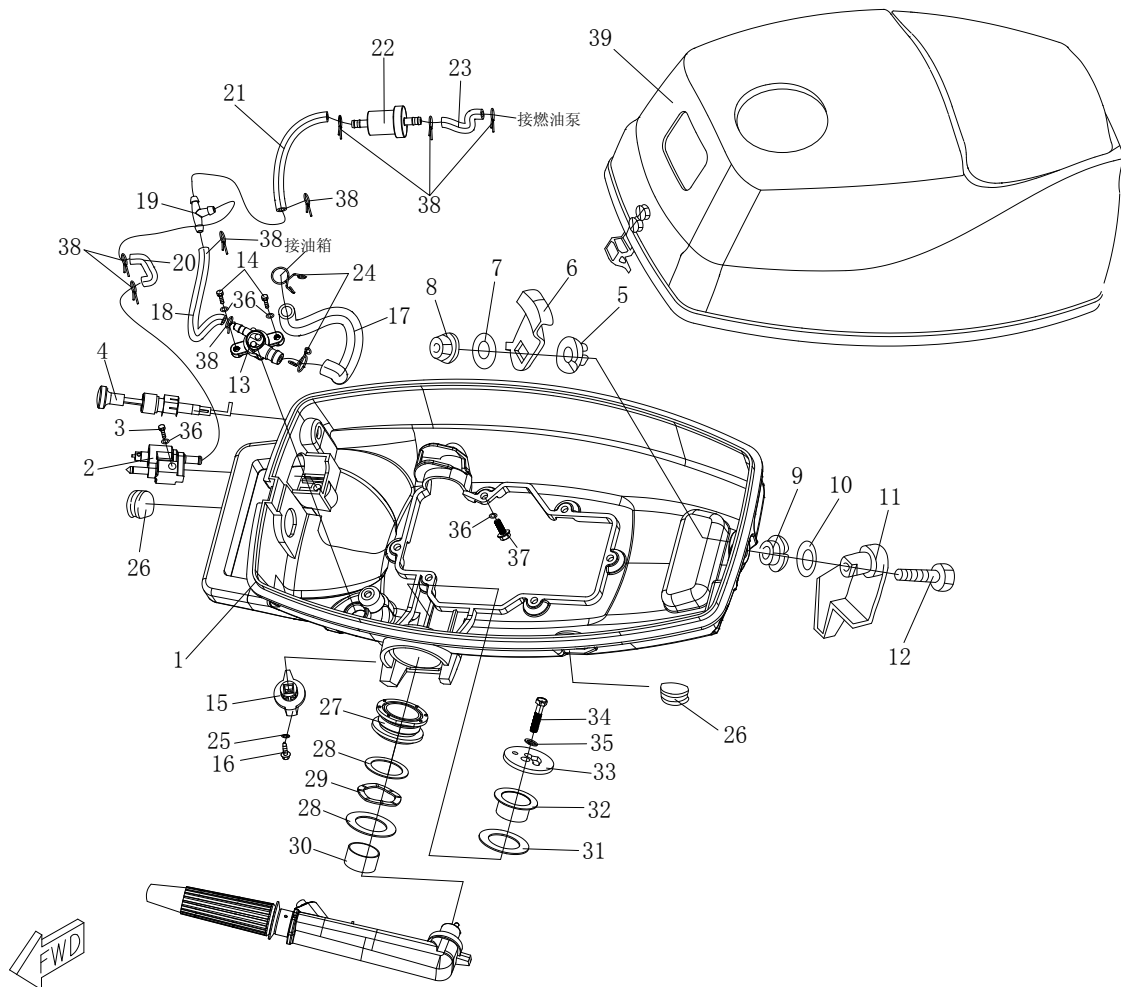


FIG. 1 TOP COWLING & BOTTOM COWLING ASSY

图8 顶罩、底罩组件

REF. NO. 号码	PART NO. 零件编号	DESCRIPTION 零件名称	QUANTITY 数量	UNIT PRICE 单价 (USD)	REF. NO. 号码	PART NO. 零件编号	DESCRIPTION 零件名称	QUANTITY 数量	UNIT PRICE 单价 (USD)
31	9010300002100	Washer 垫圈	1						
32	9010300002000	Bushing 带肩尼龙衬套	1						
33	9010300002200	Cover handle steering 方向手把盖	1						
34	0512080252	Bolt 六角头螺栓M8×25	1						
35	0305080012	Spring washer 弹簧垫圈8	1						
36	0301060012	Washer 小垫圈6	9						
37	0502060162	Bolt 六角头螺栓M6×16	6						
38	9040100002000	Clip 油管夹簧	7						
39	9021200000000	Top cowling 顶罩组件	1						

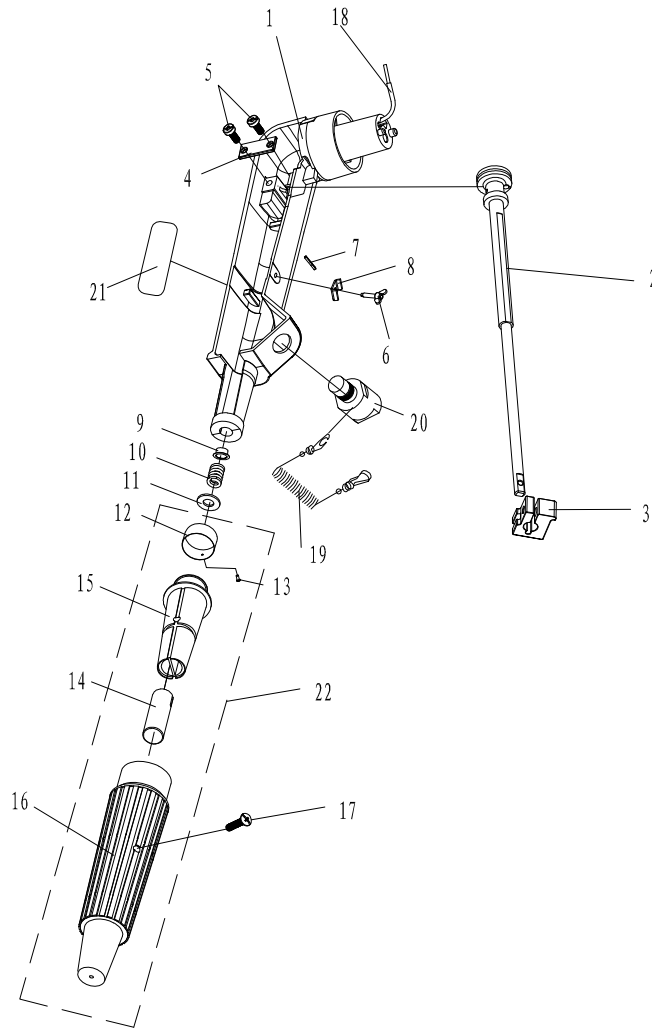


FIG9 STEERING

图9 操舵系统

REF. NO.	PART NO.	DESCRIPTION	QUANTITY	UNIT PRICE	REF. NO.	PART NO.	DESCRIPTION	QUANTITY	UNIT PRICE
号码	零件编号	零件名称	数量	单价(USD)	号码	零件编号	零件名称	数量	单价(USD)
1	9010300030100	Tilerhandle bracket 操舵手柄	1		16	9020109000400	RUBBER, HANDLE 操舵手柄握把	1	
2	8030500010000	Throttlecable 节气门杆	1		17	0507050202	Screw 十字槽半沉头螺钉M5x20	1	
3	9090501020500	Frictionpiece 操舵手柄握把摩擦块	1		18	9020109000500	Throttlecable 油门钢索组件	1	
4	8030500000400	Throttlecable plate 节气门杆固定板	1		19	9090501020300	Engine stop cable 制动束	1	
5	0505050122	Screw 十字槽盘头螺钉M5x12	2		20	9020100001000	Engine stop switch 发动机止动开关组合	1	
6	9010300040000	Frictionadjustingscrew 阻力调整旋钮组件	1		21	9090800001300	MARK 起动警示标贴	1	
7	0704160122	Cotter 开口销Φ1.6x12	1		22	9020109000600	STEERING HANDLE ASSY 操舵手柄套组件	1	
8	9090501020400	Frictionpiece plate 摩擦块夹紧片	1						
9	9090501020700	Bushing 衬套	1						
10	9090501020800	Spring 压缩弹簧	1						
11	0301100012	Washer 小垫圈10	1						
12	8060500000500	Gasoline throttle plate 油门标志牌	1						
13	0101020052	Half globe head rivet 半圆头铆钉2x5	1						
14	9020109030200	GRIP, STEERING HANDLE 手柄塑胶套嵌件	1						
15	9090501020900	Steering handle bracket cover 操舵手柄塑胶套	1						

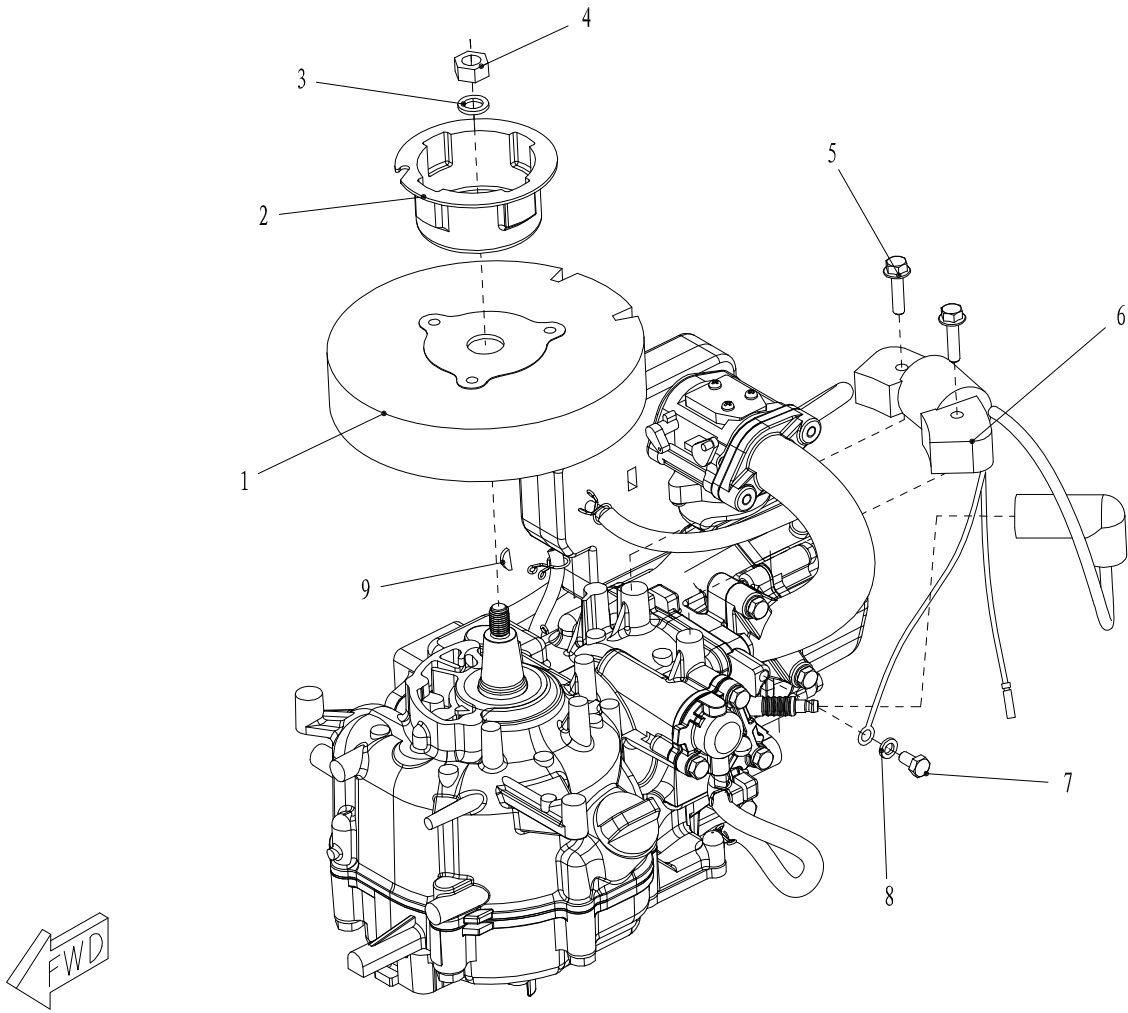


FIG10 I GINTOR ASS'Y

图10 点火系统

REF. NO.	PART NO.	DESCRIPTION	QUANTITY	UNIT PRICE	REF. NO.	PART NO.	DESCRIPTION	QUANTITY	UNIT PRICE
号码	零件编号	零件名称	数量	单价(USD)	号码	零件编号	零件名称	数量	单价(USD)
1	9020710000000	FLYWHEEL ASSY 飞轮组件	1						
2	9020700002600	STARTER PULLEY 起动轴套(镀镍)	1						
3	9010100001500	Washer 飞轮螺母垫圈	1						
4	0402101255	NUT M10X1.25 六角螺母(镀镍) M10X1.25	1						
5	0504060252	FLANGE BOLT M6X25 六角法兰面螺栓 M6X25	2						
6	9020716000000	PORTFIRE 点火器	1						
7	0502060122	BOLT M6X12 六角头螺栓 M6X12	1						
8	0301060012	Washer 小垫圈 6	1						
9	9010100001300	WOODRUFF KEY 半圆键4*13	1						

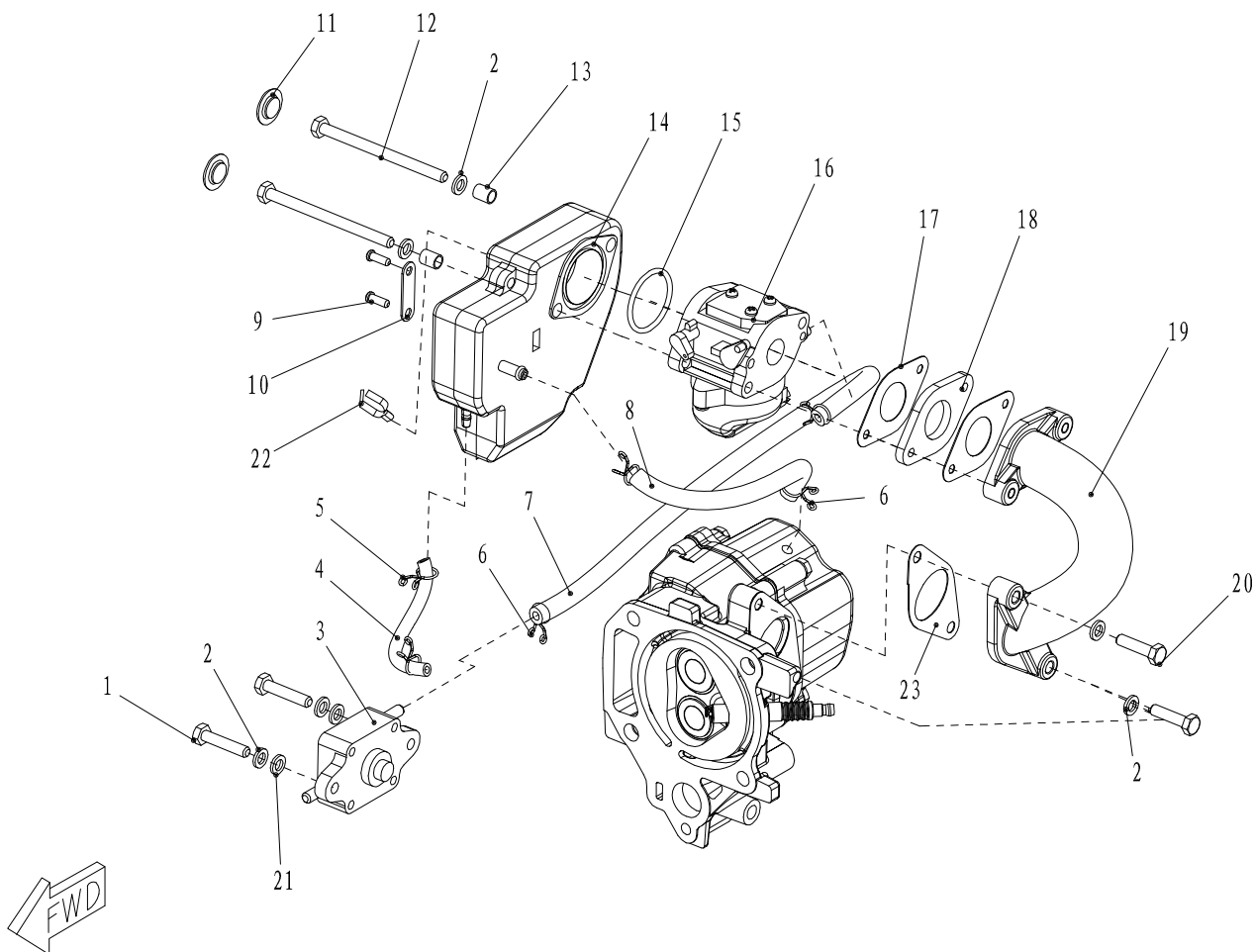


FIG11 INTAKE

图11 进气系统

REF. NO.	PART NO.	DESCRIPTION	QUANTITY	UNIT PRICE	REF. NO.	PART NO.	DESCRIPTION	QUANTITY	UNIT PRICE
号码	零件编号	零件名称	数量	单价 (USD)	号码	零件编号	零件名称	数量	单价 (USD)
1	0502060302	Bolt 六角头螺栓 M6X30	2		16	9020700003000	CARBVR ETOR 化油器	1	
2	0301060012	Washer 小垫圈 6	6		17	9020700003100	CARBVR ETOR SEAL MAT 化油器密封垫	2	
3	9020709000000	FUEL PUMP ASSY 燃油泵组件	1		18	9020700003200	CARBURETOR HEEL BLOCK 化油器垫块	1	
4	NYFHG0207	RETURN TUBE A $\Phi 2.5 \times \Phi 7 \times 80$ 回油管A $\Phi 2.5 \times \Phi 7 \times 80$	1		19	9020700002900	INTAKE MANIFOLD 进气歧管	1	
5	8060101000300	Clip 气管夹簧	2		20	0502060252	Bolt 六角头螺栓 M6X25	2	
6	9040100002000	Clip 油管夹簧	4		21	0305060012	Washer 弹垫 6	2	
7	NYFHG0509	Fuel hose 燃油管G (L=305)	1		22	9020700004300	CLAMP 圆型尼龙扣	1	
8	NYFHG0509	Fuel hose 燃油管F (L=230)	1		23	9020700002800	INTAKE MANIFOLD SEAL MAT 进气歧管密封垫	1	
9	0509420132	Screw 十字槽盘头自攻螺钉ST4.2 $\times 13$	2						
10	9020000001500	Plate 压板	1						
11	9020700003600	INTAKE SILENCER PLUG 进气消音器堵头	2						
12	0501060852	Bolt 六角头螺栓 M6X85	2						
13	9020711000400	进气消音器壳垫管	2						
14	9020711000000	INTAKE SILENCER ASSY 进气消音器组件	1						
15	0202312651	O-ring O型圈 $\Phi 31.5$ (内) $\times \Phi 2.65$	1						

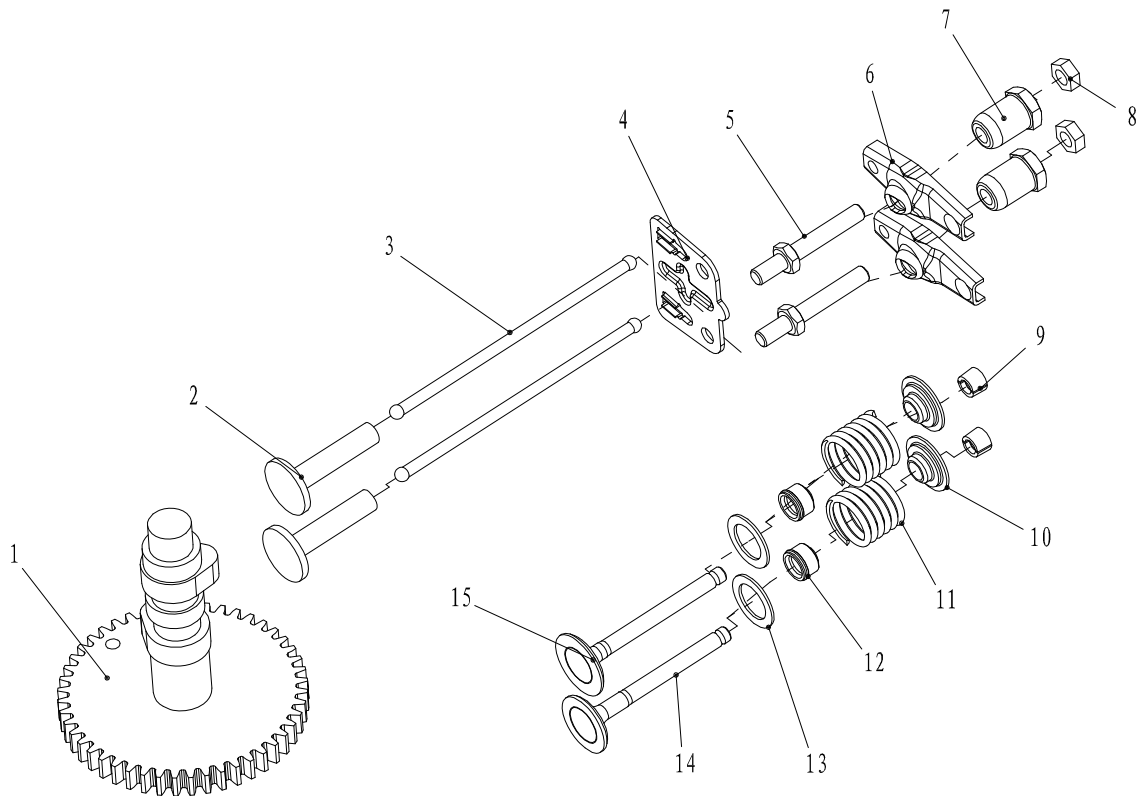


FIG12 CAMSHAFT&VALVE

图12 凸轮轴和阀门

REF. NO.	PART NO.	DESCRIPTION	QUANTITY	UNIT PRICE	REF. NO.	PART NO.	DESCRIPTION	QUANTITY	UNIT PRICE
号码	零件编号	零件名称	数量	单价(USD)	号码	零件编号	零件名称	数量	单价(USD)
1	9020704000000	CAM REDUCE PRESSURE ASSY 凸轮减压组件	1						
2	9010100000300	VALVE PUSH POLE 气门挺柱	2						
3	9020700001900	VALVE HANDSPIKE 气门推杆	2						
4	9020708000900	Cylinder head 导向板	1						
5	9010105000600	Screw 摇臂螺杆	2						
6	9010105000800	ARM VALVE ROCKER 气门摇臂	2						
7	9010105000700	PIVOT ROCKER ARM 摇臂球座	2						
8	9010105000900	Nut 六角螺母M6x0.75	2						
9	9090102000500	Valve cotter 气门锁夹	4						
10	9040101000400	Valve spring seat 气门弹簧座	2						
11	9040101000300	Valve spring (upper) 气门弹簧	2						
12	9090102030000	Valve seal 气门油封	2						
13	9020708000200	Valve spring seat (lower) 气门弹簧垫圈	2						
14	9040101000200	VALVE, EXHAUST 排气门	1						
15	904010100100	VALVE, INTAKE 进气门	1						

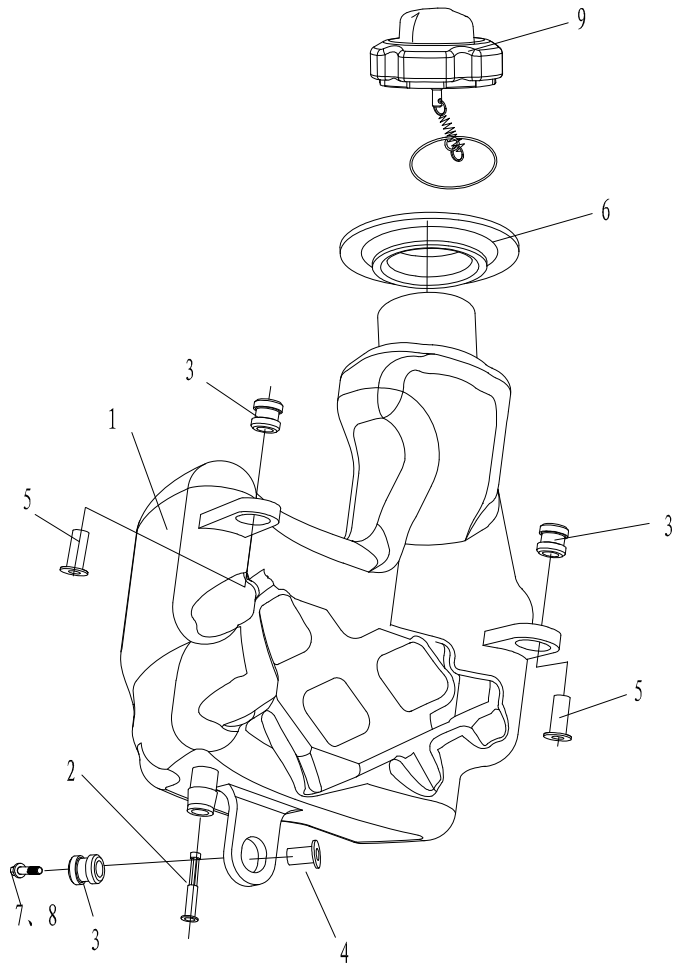


FIG13 TANK FUEL ASSY

图13 油箱组件

REF. NO.	PART NO.	DESCRIPTION	QUANTITY	UNIT PRICE	REF. NO.	PART NO.	DESCRIPTION	QUANTITY	UNIT PRICE
号码	零件编号	零件名称	数量	单价(USD)	号码	零件编号	零件名称	数量	单价(USD)
1	9020713000100	TANK FUEL 油箱体	1						
2	9010108000500	STRAINER 出油咀	1						
3	8060107000200	DAMPER IGNITION COIL 支架减震圈	3						
4	9020107000300	PIPE 减震器衬管	1						
5	9020107000500	PIPE 减震器衬管B	2						
6	9010108000400	GASKET CAP 加油口密封圈	1						
7	0502060252	Bolt 六角头螺栓 M6X25	1						
8	0303060012	Washer 大垫圈 6	1						
9	9010109000000	CAP ASSY 油箱盖组件	1						

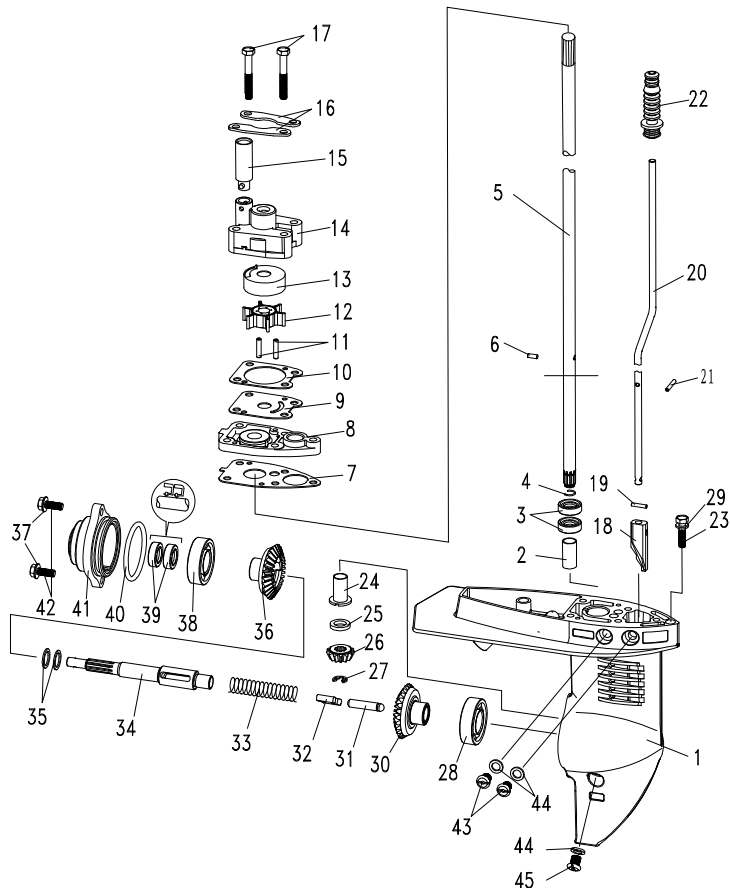


FIG14 LOWER UNIT ASSY

图14 水下装置组件

REF. NO.	PART NO.	DESCRIPTION	QUANTITY	UNIT PRICE	REF. NO.	PART NO.	DESCRIPTION	QUANTITY	UNIT PRICE
号码	零件编号	零件名称	数量	单价(USD)	号码	零件编号	零件名称	数量	单价(USD)
1	902040000100	Lower casing 水下装置壳体	1		15	9010400050400	DAMPER WATER SEAL 出水接头	1	
2	9020400000300	Cartoning machine bearing without curtain 不带挡边筒形轴承	1		16	9020400002100	water pump tie plate 泵壳固定板	2	
3	9020706000300	Oil seal 10.8x21x7 油封10.8x21x7	2		17	0502060452	Hexagon cap-bolt M6x45 六角头螺栓M6x45	4	
4	9020400000500	Snap-ring 轴用钢丝挡圈	1		18	9090600030200	Shift cam 变档凸轮	1	
5	9020400000400	Drive shaft-L 驱动轴	1		19	0702030142	Cylindrical pin 3x14D 圆柱销3x14D型	1	
5	9030400000400	Drive shaft-S 驱动轴	1		20	9020402000200	Shift cam shaft-L 变档凸轮轴-L	1	
6	9010400001600	Impeller driving pin 水泵叶轮驱动销	1		20	9030402000200	Shift cam shaft-S 变档凸轮轴-S	1	
7	9020400001100	Water pump rest gasket 水泵座密封垫	1		21	0703250201	Spring cylindrical pin 2.5x20 弹性圆柱销2.5x20	1	
8	9020400001200	Water pump rest 水泵座	1		22	9020400001400	Shift rubber guard (including spring) 变档橡胶护套(含弹簧)	1	
9	9020400001500	Outer damper 外挡板	1		23	0502060252	Bolt 六角头螺栓M6x25	1	
10	9020400001800	Pump house gasket 泵壳密封垫	1		24	9020400000200	Cartoning machine bearing with curtain 带挡边筒形轴承	1	
11	9010400001100	定位销	2		25	9020400000600	Drive pinion washer 主动齿轮垫圈	1	
12	9020406000000	Water pump impeller 水泵叶轮	1		26	9020400000700	Drive pinion 主动齿轮	1	
13	9020400001700	Water pump inner house 水泵内壳	1		27	0601060012	Opening check ring 开口挡圈	1	
14	9020400001900	Water pump outer housing 水泵壳	1		28	0801600421	Bearing 6004C2 深沟球轴承6004C2	1	

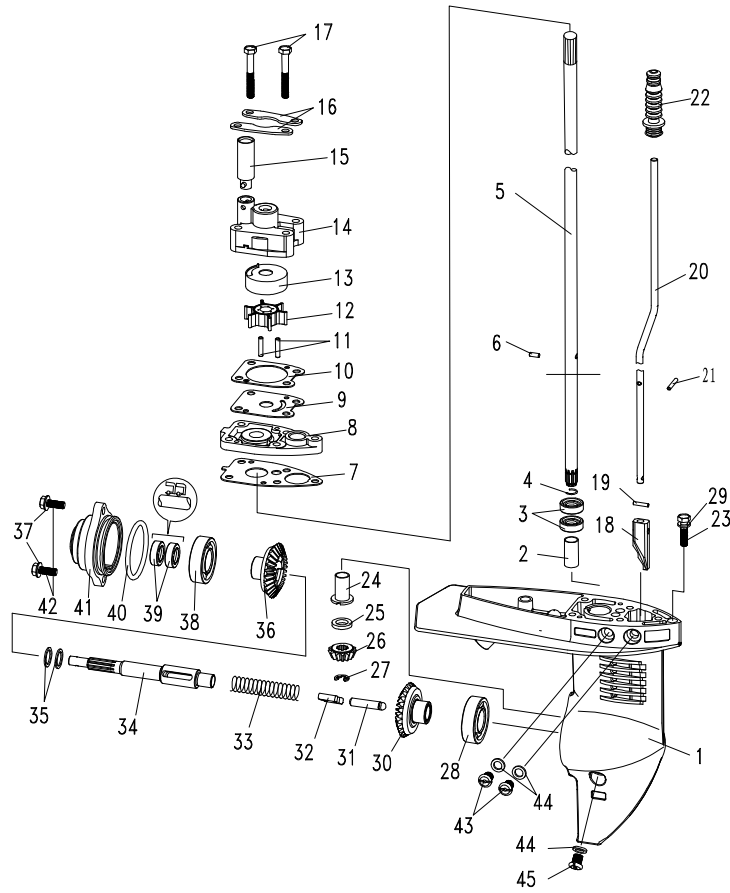


FIG14 LOWER UNIT ASSY

图14 水下装置组件

REF. NO.	PART NO.	DESCRIPTION	QUANTITY	UNIT PRICE	REF. NO.	PART NO.	DESCRIPTION	QUANTITY	UNIT PRICE
号码	零件编号	零件名称	数量	单价 (USD)	号码	零件编号	零件名称	数量	单价 (USD)
29	0301060012	Washer 小垫圈6	1		44	9090600003000	Oil plug gasket 油孔螺栓密封垫	3	
30	9020401000000	GEAR assy 正档齿轮组件	1		45	9090600002900	Oil plug 放油孔螺栓	1	
31	9020400000800	Shift plunger 变档柱塞	1						
32	9020403000200	Clutch plate 离合器块	1						
33	9010400020200	Compression spring 压缩弹簧	1						
34	9020403000100	Propeller shaft 螺旋桨轴	1						
35	9020400000900	倒档齿轮垫圈	2						
36	9020404000000	Reverse gear assy 倒档齿轮组件	1						
37	0301060012	Washer 小垫圈6	1						
38	0801600421	Bearing 6004C2 深沟球轴承6004C2	1						
39	9010400030300	Oil seal 13x22x7 油封13x22x7	2						
40	0201550351	Low casing cap O-ring 水下装置壳体盖O形圈外径55*线径3.5	1						
41	9020405000100	Low casing cap 水下装置壳体盖	1						
42	0502060162	bolt M6x16 六角头螺栓M6x16	2						
43	9090600002800	Oil plug 注油口螺塞	2						

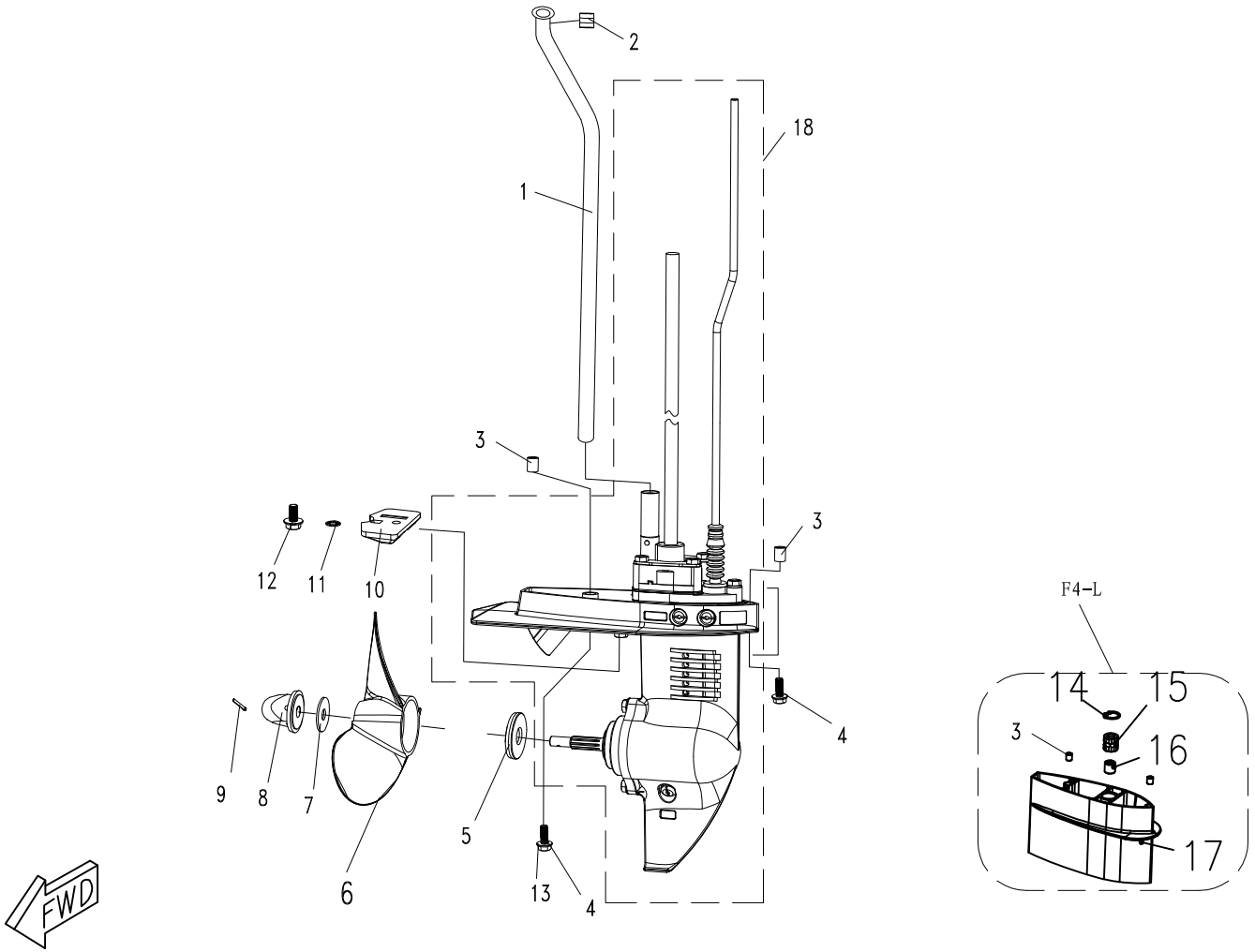


FIG15 LOWER CASING&DRIVE

图15 水下驱动系统

REF. NO.	PART NO.	DESCRIPTION	QUANTITY	UNIT PRICE	REF. NO.	PART NO.	DESCRIPTION	QUANTITY	UNIT PRICE
号码	零件编号	零件名称	数量	单价 (USD)	号码	零件编号	零件名称	数量	单价 (USD)
1	9030200000100	WATER TUBEASSY-S 进水管-S	1		14	0602220012	Spring collar 孔用弹性档圈22"A"	1	
1	9020200000100	WATER TUBEASSY-L 进水管-L	1		15	9020300000200	Bush 驱动轴衬套	1	
2	9010300001400	Rubber ring 水管工形橡胶圈	1		16	9020300000300	Bush 驱动轴衬套垫管	1	
3	9020000000100	Dowel pin 空心定位销	4		17	9020300000100	Extension 接长体	1	
4	0502060402	Bolt 六角头螺栓M6x40 (F4-S)	2		18	9020403010000	LOWER UNIT ASSY-S 水下装置组件-S	1	
4	9020000000200	Bolt 六角长螺栓M6*167 (F4-L)	2		18	9030403010000	LOWER UNIT ASSY-L 水下装置组件-L	1	
5	9010400001800	Collar 衬套	1						
6	9020500000000	Proeller assy 螺旋桨组件	1						
7	9010400001900	Washer 垫圈	1						
8	9010400060000	NUT PROPELLER 盖形螺母组件	1						
9	0704250302	Cotter pin 开口销 $\phi 2.5 \times 30$	1						
10	9010400001700	Anode 阳极	1						
11	0306060012	Lock washer 内齿锁紧垫圈 $\Phi 6$	1						
12	0504060122	Flange bolt 六角头法兰面螺栓M6x12	1						
13	0301060012	Washer 小垫圈6	2						